



EAW UB12 SE Loudspeaker shown

MultiMount™

All Weather Pan & Tilt Speaker Ceiling Mount

The MultiMount 8CM is an indoor/outdoor speaker mount that attaches loudspeakers, weighing up to 15 lbs./7 kg., to ceilings, Unistrut and other overhead structural surfaces. Independent pan and tilt adjustments makes it easier to aim sound into the desired area. A separate feature orients speaker cabinets clockwise 90° into either a horizontal or vertical orientation.

The MultiMount 8CM adapts to loudspeakers that offer standard single and two hole mounting patterns. It is produced from aluminum and other weather resistant materials, making this an ideal mount for use in outdoor applications such as patio restaurants, theme parks, hotel pool side areas and other outdoor installations.

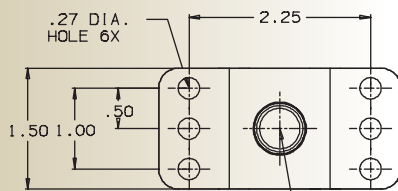
STANDARD FEATURES:

- Weather resistant for indoor and outdoor use
- Separate pan, tilt and clockwise aiming adjustments
- Adapts speakers to ceilings and other overhead surfaces
- Accommodates standard single and two hole loudspeaker mounting patterns

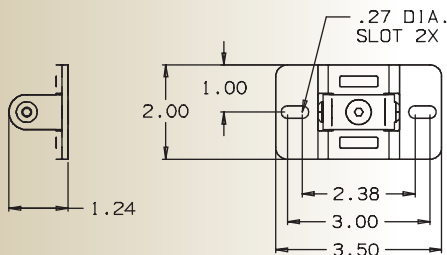
SPECIFICATIONS:

Material:	Aluminum alloy
Finish:	Anodize/powder coat
Color:	Black and white
Working load limit:	15 lbs. (6.8 kg) max
Design factor:	10:1 ratio
Net weight:	1.9 lbs (.40 Kg)
Shipping weight:	2 lbs (.9 Kg)
Pack count:	2 units/carton

DIMENSIONS:

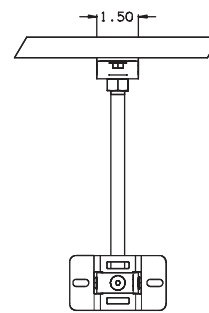
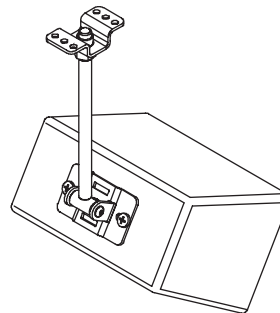


Mounting Plate

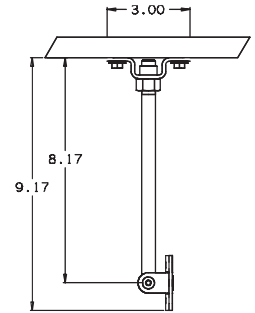


Speaker Adapter Plate

HORIZONTAL ORIENTATION:

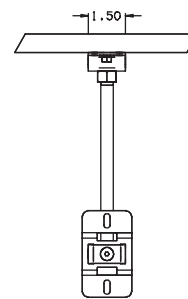
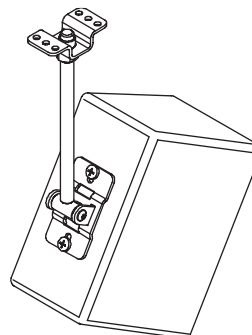


Front View

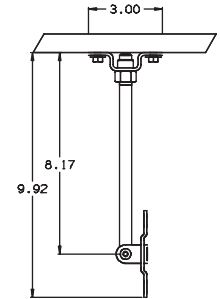


Side View

VERTICAL ORIENTATION:



Front View



Side View



A division of:
ADAPTIVE TECHNOLOGIES GROUP
 1635 E. Burnett Street
 Signal Hill, CA 90755 USA
 PH: 562.424.1100 FX: 562.424.3520

www.allenproducts.com

WARNING: Mounting and/or suspension of audio and video equipment requires experienced professionals. Improperly installed equipment can result in property damage, personal injury and/or liability to the installing contractor.



ALWAYS USE SAFETY CABLES.