



PoleStar®

All-Weather Pole and Column Adapter

This family of all-weather, load rated components provides a strong foundation for mounting and aiming loudspeakers to poles and columns, both indoors and outdoors. The Polestar system is comprised of a stainless steel support arm, pole adapters, a dual adapter and band kits. Everything needed at the job site is available from stock. Starting with the popular load rated pole adapters, the following describes all the components that are available to complete your loudspeaker installation.

INSTALLERS TAKE NOTE: Always secure mounted objects to the mounting structure with safety cables.



SINGLE LOUDSPEAKER INSTALLATION FOR 2-3/8" POLES AND LARGER

This type of installation assumes that the selected loudspeaker come with its own yoke style mounting arm. The installation then further requires a Support Arm, a Pole Adapter and a Band Kit. Each of these components is constructed of stainless steel material and come with the required assembly hardware. If a yoke arm is not supplied with the selected loudspeaker, contact us at custserv@allenproducts.com



DUAL LOUDSPEAKER INSTALLATION FOR 6" DIAMETER POLES & LARGER

This type of installation assumes that the pole is 6" in diameter or larger and the speakers come with their own yoke style mounting arms. This installation requires a dual adapter arm, the larger pole adapter and a band kit. When an adequate anchor point is not available, include the safety anchor. Each of these components are all-weather rated and come with the required assembly hardware. If a yoke arm is not supplied with the selected loudspeakers, contact us at custserv@allenproducts.com



THREE LOUDSPEAKER INSTALLATION FOR 6" DIAMETER POLES & LARGER

This type of installation assumes that the pole diameter is a 6" or larger and that the selected loudspeakers come with their own yoke style mounting arms. This installation requires a support arm, a dual adapter arm, the larger pole adapter and a band kit. When an adequate anchor point is not available, include the safety anchor. Each of these components are all-weather rated and come with the required assembly hardware. If a yoke arm is not supplied with the selected loudspeakers, contact us at custserv@allenproducts.com.

Pole Adapters

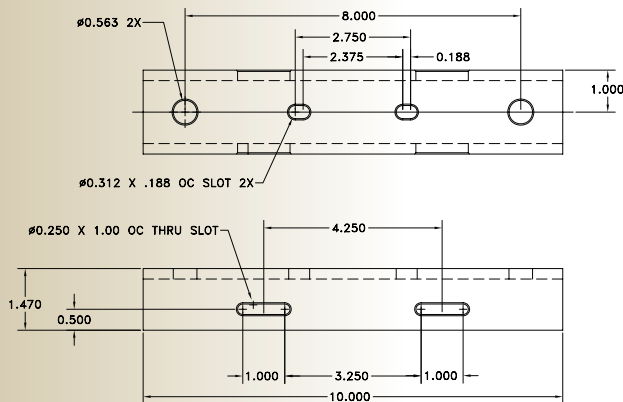
PM-MOUNT-6-DOWN

2 - 3/8" DIAMETER AND LARGER

Designed for 6"/154mm down to 2- 3/8" diameter poles and columns. This all-stainless mount with natural finish supports up to 150 lb./68 Kg, in a vertical load with a 5:1 design factor. It accommodates the PM Series Support Arm and comes with hardware to mount the support arm to the pole adapter. There are four standard permanent band kits available in different lengths and are sold separately. Custom lengths are also available.

PM-MOUNT-6DOWN

WEIGHT: 3 lb./1.4 Kg



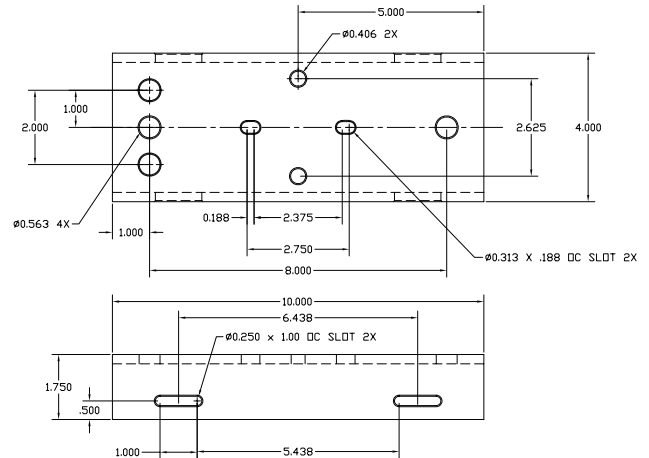
PM-MOUNT-6-UP

2 - 3/8" DIAMETER AND LARGER

For 6"/154mm diameter and larger poles and columns, use the PM-Mount-6UP. This all-stainless adapter offers a natural finish and supports up to 300 lb./68 Kg, in a vertical load with a 5:1 design factor. It accommodates the PM Series Support Arm, Dual Adapter and includes hardware for their attachment. There are four standard permanent band kits available in different lengths and are sold separately. Custom lengths are also available.

PM-MOUNT-6UP

WEIGHT: 8 lb./3.6 Kg



STANDARD FEATURES:

- Mounts to round surfaces including poles and columns
- All stainless steel construction
- Load rated components
- Components use common hole patterns
- Cosmetic trim components included
- Job-site ready

SPECIFICATIONS:

- Material: Stainless steel alloy
 Finish: Natural passivated

