

EAW JF100 Loudspeaker shown



U-Series

Adjustable Width Speaker Mount

Adjustable Loudspeaker Mounting Kits support most of the mountable loudspeakers in the 60 lbs./22 kg. range, or less and its open side arm slots allow a single installer to easily mount loudspeakers in this weight range. Loudspeakers can be rotated within the arms to acquire the desired tilt angle. Separate side holes permit the angle of the speaker to be locked permanently with lag bolts. Since there are only two sizes, inventory requirements are manageable.

Fully captive arm holes permit safe, secure mounting of loudspeakers under balconies, overhangs and from ceilings. The brackets' base gives installers multiple options for placing speakers over irregular and unpredictable mounting surfaces because of its unique mounting slot pattern.

STANDARD FEATURES:

- Two models support most loudspeakers, 60 lbs/22 kg. or less
- 16" and 24" hole centers allow for stud mounting
- Arms have open slots for fast one person installations
- Sound isolation gaskets help block sound transmission through walls
- Assembly hardware included
- Permanent angle lock feature

SPECIFICATIONS:

Material: Structural steel alloy
Finish: Powder coat
Colors: Black and white
Working load: 60 lbs/27 kg
Design factor: 10:1 ratio

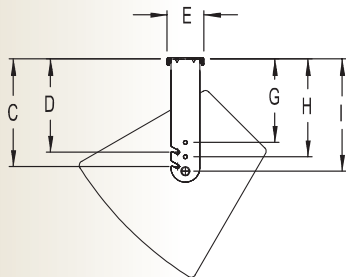
OPTIONAL ACCESSORIES:

- Metric hardware
- 2-1420 M6 hardware
- 2-1430 M8 hardware
- 2-1440 M10 hardware
- Safety cables

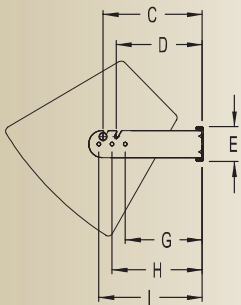
Net weight: (AJ-1524) 5.8 lbs/2.6 kg
Shipping weight: 12 lbs/5.5 kg/pair

Net weight: (AJ-2336) 10.7 lbs/4.8 kg
Shipping weight: 24 lbs/11 kg/pair

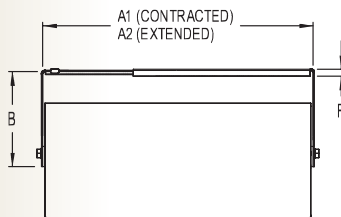
HARDWARE KIT:
 Includes an assortment of 1/4", 5/16" and 3/8" bolts and hardware plus two 1/4" thick sound isolation gaskets.



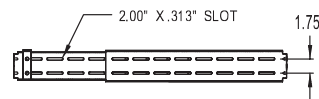
Side view (ceiling application)



Side view (wall application)



Top view



Back view

DIMENSIONS: INCHES / METRIC

Model #	A1	A2	B	C	D	E	F	G	H	I
AJ-1524	15" / 381	24" / 609	11.1" / 283	9.5" / 241	8.0" / 203	3.38" / 86	.50" / 12.7	6.9" / 175	8.5" / 216	9.9" / 251
AJ-2336	23" / 584	36" / 914	11.8" / 299	10.3" / 260	8.8" / 222	3.8" / 97	.82" / 21.0	7.7" / 196	9.2" / 233	10.7" / 272



ALLEN PRODUCTS COMPANY, INC.

1635 E. Burnett Street
 Signal Hill, CA 90755 USA
 PH: 562.424.1100 FX: 562.424.3520

www.allenproducts.com

WARNING: Mounting and/or suspension loudspeakers requires experienced professionals. Improperly installed loudspeakers can result in property damage, personal injury and/or liability to the installing contractor.