

MEGS In-line Array System

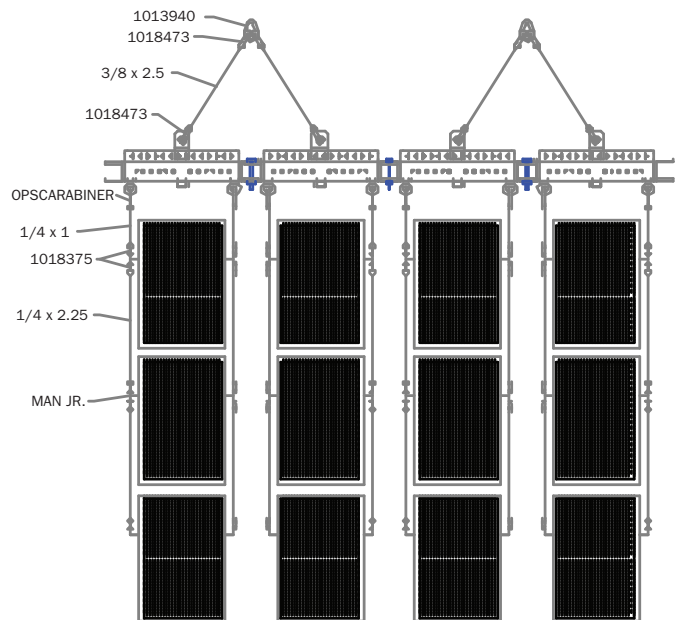
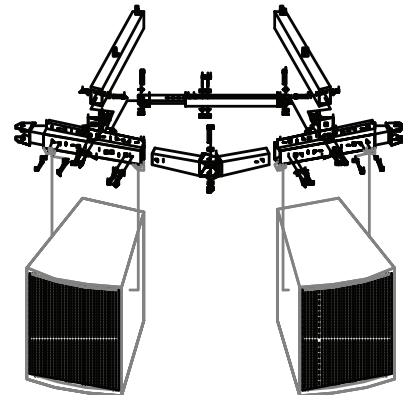
Sequential loading

The MEGS Pivotal Flying System quickly and effortlessly suspends and aims full, large-venue loudspeaker clusters into both horizontal and vertical arrays to suit a multitude of splay angles and column gaps in order to accommodate severe down tilts. This makes for an ideal loudspeaker rigging system for large-scale facilities such as, concert halls, stages, stadiums and sport arenas. The MEGS system is comprised of three basic components;

- Various sizes of ruggedly constructed overhead suspension trusses that adjust in width to accommodate different loudspeaker cabinets and horizontally aims entire columns of loudspeakers, up to 2100 lb./955 Kg per column.
- The MEGS telescoping control arm that links trusses together and sets the relative horizontal angle (pan angle) between two trusses.
- Specialized side pivoting components install into the sides of loudspeaker cabinets (at the loudspeaker's center of gravity) and offer an assortment of suspension points, which can alter the positioning of the loudspeaker in space and align the acoustic wavefronts of the loudspeakers.

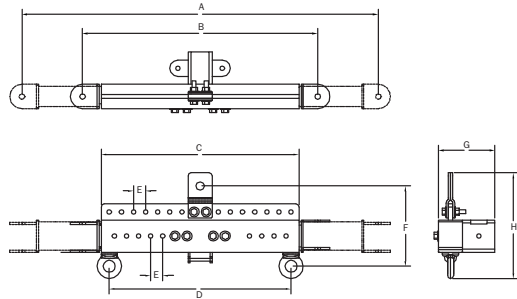
SPECIFICATIONS:

Material:	Structural alloy steel tubing
Finish:	Powder coat
Color:	Flat black
Working load limit:	2100 lb./954 Kg
Design factor:	Design ratio: 5:1



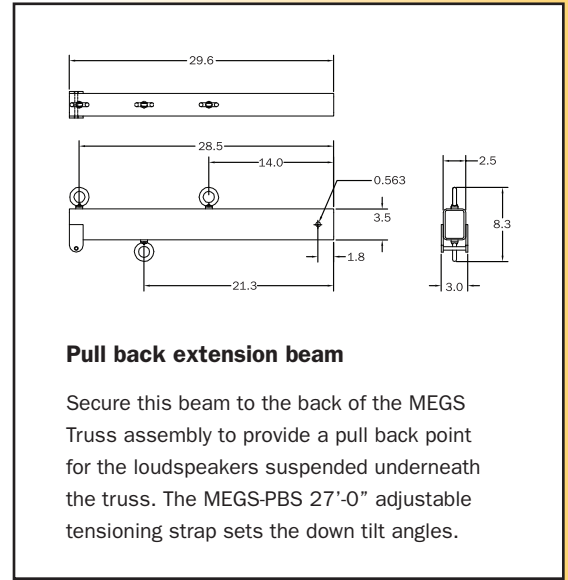
MEGS In-line Array System

Sequential loading



Truss assembly

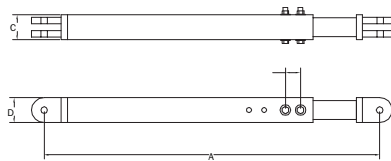
The MEGS truss is a substantial overhead weldment that supports several loudspeaker cabinets in a vertical column, up to 2100 lb. with a 5:1 design factor. Adjustable pivoting joiner arms help accommodate a range of cabinet widths and a selection of pick up points allow for lateral balancing.



Pull back extension beam

Secure this beam to the back of the MEGS Truss assembly to provide a pull back point for the loudspeakers suspended underneath the truss. The MEGS-PBS 27'-0" adjustable tensioning strap sets the down tilt angles.

TRUSS ASSEMBLY	A inch/mm	B inch/mm	C inch/mm	D inch/mm	E inch/mm	F inch/mm	G inch/mm	H inch/mm
MEGS-216-T	20.92/531	15.42/392	10.79/274	8.54/216	2.06/52	9.56/243	7.00/178	12.59/319
MEGS-356-T	30.23/768	21.23/539	16.5/419	14.00/356	2.06/52	9.56/243	7.00/178	12.59/319
MEGS-520-T	42.13/1070	27.13/689	22.5/572	20.5/520	2.06/52	9.56/243	7.00/178	12.59/319
MEGS-575-T	44.12/1121	29.12/740	24.5/622	22.5/571	2.06/52	9.56/243	7.00/178	12.59/319
MEGS-760-T	60.63/1540	36.63/930	30.00/762	30.00/762	2.06/52	9.56/243	7.00/178	12.59/319
MEGS-915-T	72.63/1845	42.63/1032	36.00/914	36.00/914	2.06/52	9.56/243	7.00/178	12.59/319



Adjustable splay strut

Use this adjustable strut in between truss assemblies and speaker columns to set and lock specific splay angles. Quick release pins join the clevis ends to the truss assemblies making for quick set ups and tear downs.

SPLAY STRUT	A inch/mm	B inch/mm	C inch/mm	D inch/mm
MEGS-216-TB	9.79/249	15.42/392	2.00/50.8	2.00/50.8
MEGS-356-TB	21.73/552	14.51/369	2.00/50.8	2.00/50.8
MEGS-520-TB	33.64/854	21.61/549	2.00/50.8	2.00/50.8
MEGS-575-TB	38.74/984	26.71/678	2.00/50.8	2.00/50.8
MEGS-760-TB	49.13/1248	31.08/789	2.00/50.8	2.00/50.8
MEGS-915-TB	66.61/1692	40.15/1019	2.00/50.8	2.00/50.8



A division of:
ADAPTIVE TECHNOLOGIES GROUP

1637 E. Burnett Street
Signal Hill, CA 90755 USA
PH: 562.424.2200 FX: 562.424.1127

www.atmflyware.com

WARNING: Mounting and/or suspension loudspeakers requires experienced professionals. Improperly installed loudspeakers can result in property damage, personal injury and/or liability to the installing contractor.



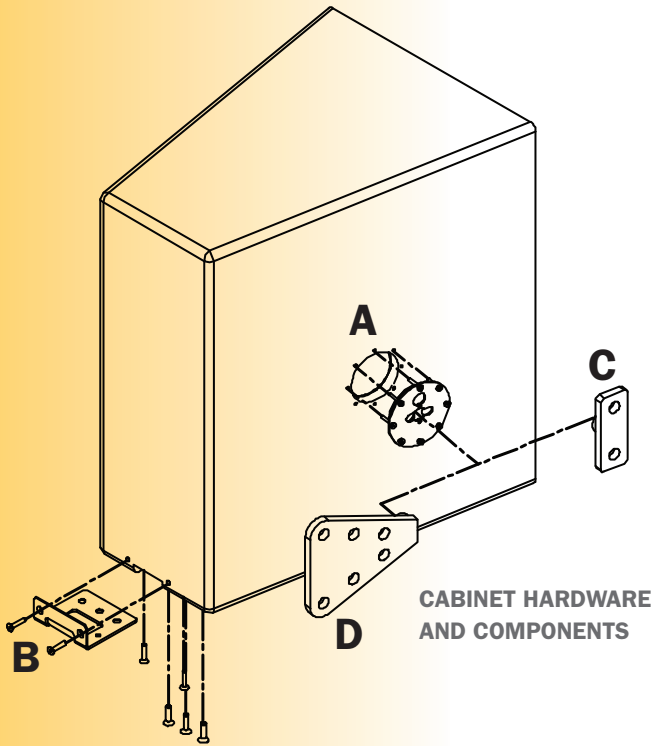
MADE IN THE USA

ALWAYS USE SAFETY CABLES.

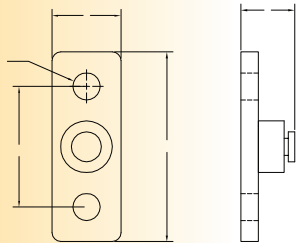
MEGS In-line Array System

Sequential loading

When a loudspeaker cluster combines the MEGS Pivotal Series side fittings and MEGS Pivotal Series pull back clips, the acoustic wavefronts of the enclosures remain in alignment while down tilt angles are adjusted easily and with minimal tension in the pull strap. Additionally, the MEGS Pivotal Series can be installed to allow the loudspeaker to be arrayed in an upright orientation or an inverted orientation.

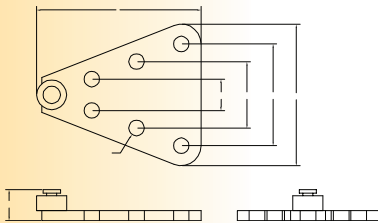


CABINET HARDWARE AND COMPONENTS



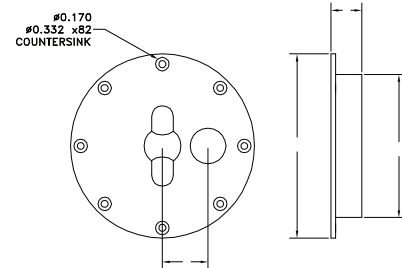
(C) Quick release, in-line linear link

This suspension link snaps and locks inside the Pivot Connector and provides a load-rated tilt rotation point connection for wire rope above and below the cabinet.



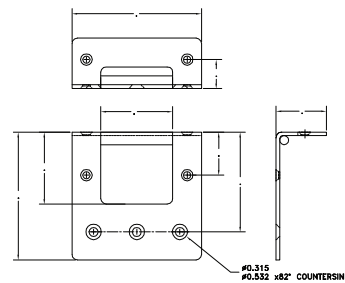
(D) Quick release, in-line spherical link

This suspension link snaps and locks inside the Pivot Connector, provides a load-rated tilt rotation point connection for wire rope above and below the cabinet. Multiple attachment points, in a cam-like fashion further allow the loudspeaker to be positioned forward and backward, relative to other loudspeakers in the column to balance their acoustical wavefronts.



(A) Quick release side-mounted pivot connector

Eliminate compounding of multiple loudspeakers cabinet's by installing two Pivot Connectors into the sides of the cabinet at the center of gravity. The column loading will then transfer into the rigging system and allows an independent tilt rotation. All hardware is included.



(B) Pull back strap handle

Install this bracket to the lower back of the loudspeaker cabinet to provide a compatible and sturdy pull back point for the MEGS-PBS tensioning strap assembly. All hardware is included.



A division of:
ADAPTIVE TECHNOLOGIES GROUP

1637 E. Burnett Street
Signal Hill, CA 90755 USA
PH: 562.424.2200 FX: 562.424.1127

www.atmflyware.com