

MP-500NPT-TA

(110 lb. WLL)

CHANNEL STRUT ADAPTER FOR 1/2" SCHED-40 THREADED PIPE

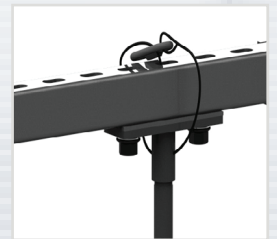
STRUT ATTACHMENT



ADAPTER FOR U- CHANNEL

The MP-500NPT-TA is a tube adapter that connects standard 1/2-14 sched-40 NPT pipes to channel strut. This adapter allows speakers and other objects to be mounted to channel strut using standard off the shelf 1/2-14 sched-40 NPT pipes.

The MP-500NPT-TA is designed to hold overhead objects with a maximum weight of 110 lbs. Maximum length of 48" long pipe is recommended.



KEY FEATURES:

- ▶ For overhead loudspeaker applications.
- ▶ Adapts to standard schedule-40 1/2" pipe.

OPTIONAL ACCESSORIES:

- ▶ See Threaded Pipe Datasheet

SPECIFICATIONS:

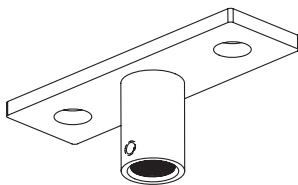
Material: Structural Steel
Finish: Powder Coat
Color: Black
WLL: 110 lb / 50 Kg
Design Factor: 5:1
Shipping Weight: 1.2 lbs / .55 Kg

PACKAGE CONTENTS:

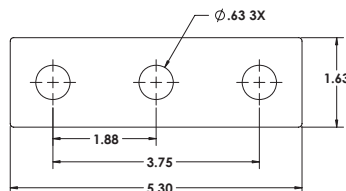
1 pc Tube Adapter, 1/2-14NPT/NPS
1 pc Sound Isolation Pad
2 pcs Flange bolt, 1/2"-13x1.5", blk
2 pcs lat washer w/ neoprene, 1/2"
2 pcs Channel retainer nut, 1/2"-13
1 pc Set screw, 1/4-20

DIMENSIONS:

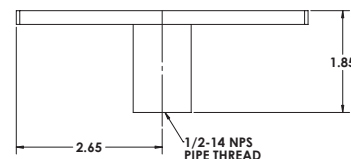
MP-500NPT-TA
Tube Adapter



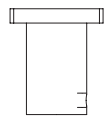
Top View



Front View



End View



Rated for indoor use.

ALWAYS INSTALL SAFETY CABLES

WARNING: Mounting and/or suspension of audio and video equipment requires experienced professionals. Improperly installed loudspeakers can result in property damage, personal injury and/or liability to the installing contractor.